

NEW ZEALAND THREE YEAR WARRANTY

IMPORTANT Customer Warranty Card - please retain this for your records!

Product: Econo-Heat® _____ watt wall panel heater

Place of Purchase: _____ Date of Purchase: _____

Attached your proof of purchase here for possible warranty claim.

(day/month/year)



THREE YEAR WARRANTY



WARRANTY CONDITIONS

Econo-Heat warrants that your Econo-Heat wall panel heater is free from manufacturing defects, subject to the following conditions:

- Such warranty shall be to repair or replace the goods in the event of Econo-Heat being informed of any manufacturing defect (which shall exclude fair wear and tear) notified to Econo-Heat New Zealand or an approved Econo-Heat stockist within 3 (three) years of the original purchase ("the warranty period").
- Any liability on Econo-Heat New Zealand shall be conditional on the goods having been stored and installed properly (in accordance with Econo-Heat's installation instructions) and, from the date of delivery:
 - Having been used and maintained in accordance with Econo-Heat's instructions and/or labelling on the goods;
 - No repairs, alterations thereon having been carried out by the Buyer or any third party.
- The warranty does not replace Econo-Heat New Zealand's obligations under the Consumer Guarantees Act. Econo-Heat New Zealand has no obligation to replace the heater if you change your mind.

Limitation of Liability

- Save as expressly provided for in these Conditions of Sale, Econo-Heat shall not be liable to the Buyer (or their employees, servants or agents, contractors, or successor purchasers) for any direct, indirect, incidental or consequential damages of any nature howsoever caused (whether based in delict or contract or otherwise) pursuant to or arising in respect of the installation and/or use of goods.
- The Buyer (and any successor purchasers) hereby indemnifies Econo-Heat (its members, employees and agents) against all actions, proceedings and claims whatsoever brought against it (its members, employees or agents) by any third party pursuant to, or arising in respect of the installation and/or use of the goods.

WARRANTY PERIOD

260 Watt and 400 Watt Econo-Heat wall panel heaters purchased in New Zealand are covered by a 3 year warranty from date of purchase. The first two years are covered by the International Warranty provided by the manufacturer via Econo-Heat New Zealand, and the third year by Econo-Heat New Zealand.

WARRANTY PROCEDURES

Please refer firstly to the installation instructions to ensure that you have followed them correctly.

1. Read the warranty card carefully.
2. If you wish to make a claim under the warranty, contact Econo-Heat New Zealand or the Econo-Heat stockist you purchased your heater from.
3. Proof of date of purchase **must be provided**. Econo-Heat New Zealand suggests that you attach your original purchase documents to this form and complete the above section to enable you to proceed quickly in the event of a claim.
4. You will need to provide a detailed description of the problem you are experiencing at the time of claim.

DESIGNED AND MANUFACTURED IN SOUTH AFRICA BY ECONO-HEAT
CREATORS OF THE ORIGINAL AND ENERGY-SAVER ECONO-HEAT ELECTRIC WALL PANEL HEATER.

Econo-Heat New Zealand | PO Box 22-377 | Wellington 6441
Phone 04 938 4328 | Email sales@econo-heat.co.nz

THE ORIGINAL LOW COST ENERGY-SAVER HEATER

efficient economical effective easy

www.econo-heat.co.nz

eheater™

WHOLE ROOM HEATER

USER MANUAL

PLEASE READ CAREFULLY BEFORE INSTALLING

MODEL NO. 0603 (400 WATT) - NZ PART EH400 AND EH400L
MODEL NO. 0606 (260 WATT) - NZ PART EH260 AND EH260L



THE ORIGINAL LOW COST ENERGY-SAVER HEATER

efficient economical effective easy

www.econo-heat.co.nz

Your energy-saver Econo-Heat wall panel heater is a whole room heater designed as an alternative to conventional locality heaters and other forms of high output heaters that use large amounts of electricity. It operates at relatively low surface temperatures (approximately 75°C - 90°C, safe to touch if child is over 2 years old), and uses minimal electricity. There are numerous advantages to using Econo-Heat electric wall panel heaters. They are efficient, economical, effective, save on floor space, are safer to use around children and pets, operate at the same electricity cost of just four incandescent light bulbs and can be painted to match any décor with water-based paint (do not use enamel paint). Econo-Heat wall panel heaters are designed to be left on for long periods of time, giving you comfortable background heat at a low cost. This is similar in concept to a central heating system – yet far less expensive. Econo-Heat wall panel heaters are New Zealand Safety Standards compliant and have a three year warranty provided that they are used correctly.

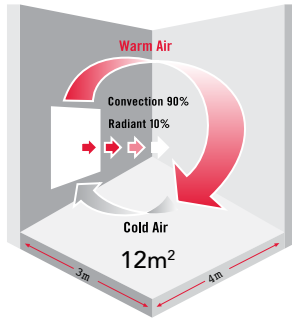
ROOM SIZES

Due to variable factors, it is impossible to specify what size panel or how many to install in a room. We do however, recommend the following:

- For areas in New Zealand with very cold winters: 1 x 400 Watt per 8m² to 12m² of floor area.
- For areas in New Zealand with less severe winters: 1 x 400 Watt per 12m² of floor area.

CONVECTION TECHNOLOGY

Econo-Heat wall panel heaters provide efficient room heating at a low cost. Using natural convection technology, heat is generated behind the heater in the space between the panel and the wall, which leads to an efficient up-draught of heat circulated into the room (the heated air comes out from behind the heater at the speed of 0.7m per second!). This principle of convection means that about 90% of the heat comes from the back of the panel, while only 10% is radiated from the front of the panel. Convection heating (whole room heater) is far more effective than radiated heating (freestanding locality heater).



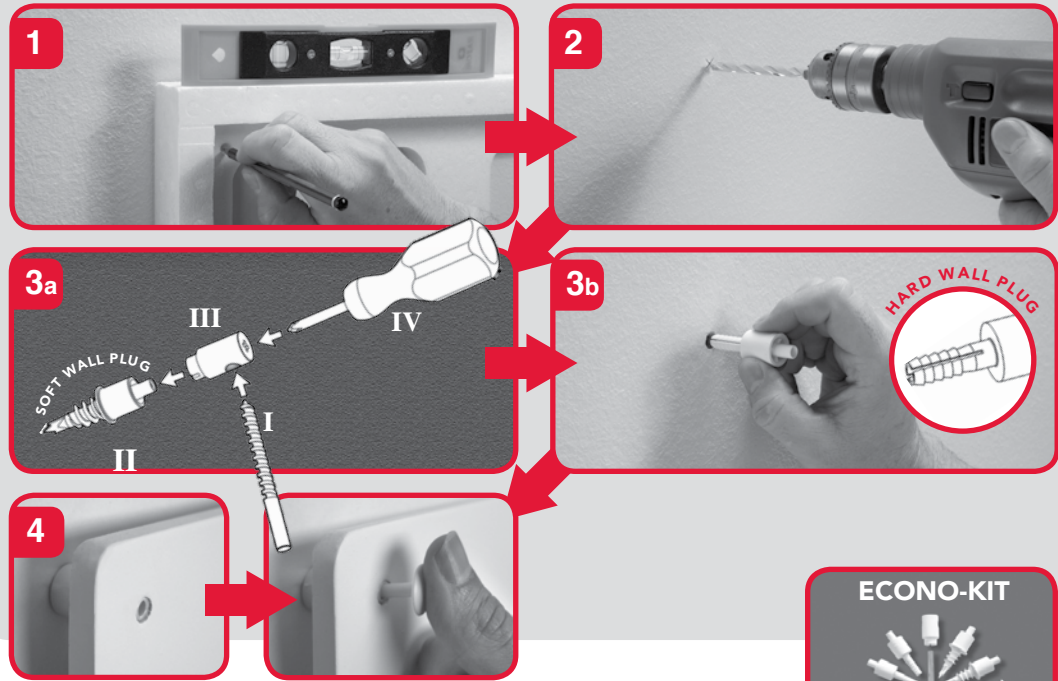
WARNINGS

- In order to avoid overheating, do not cover the heater with anything, including wet or dry washing. The space between the heater and wall must remain clear for air to flow. Covering the panel when switched on could result in a fire hazard.
- Before drilling into a wall, check that the area is free of electric wiring embedded in the wall.
- The heater must not be mounted immediately below an electrical wall socket.
- Econo-Heat wall panel heaters are for wall mounting only and should under no circumstances be used as free standing heaters.
- First time use: When switching on the heater, there may be a slight odour during the first day or two. This is quite normal and is caused by the residual moisture and does not present any health hazard.
- This appliance is child safe – i.e. safe to briefly touch if child is over 2 years old. However, an infant or a baby should not be left unattended as prolonged contact with the surface may result in an injury.
- This appliance is fitted with a two core cable only. When re-wiring the cord to a new plug, ensure that the Brown wire is connected to Live and the Blue wire is connected to Neutral. Do not connect any of the wires to Earth.
- If the supply cord of this panel is damaged, it must be replaced by the manufacturer, its service agent or a similarly qualified person in order to avoid a hazard.
- Do not run supply cord behind the panel.
- This appliance is not suited for use in the bathroom.
- This appliance is not intended for use by persons (including children) with reduced physical, sensory or mental capabilities, or lack of experience and knowledge, unless they have been given supervision or instruction concerning use of the appliance by a person responsible for their safety.
- Children should be supervised to ensure that they do not play with the appliance.
- The Econo-Heat wall panel heater is manufactured to withstand a consistent voltage supply between 220 – 250VAC. Customers in areas that frequently experience surges/spikes or erratic power supply, are advised to use a surge protector with our appliance. Our warranty does not cover damage as the result of surge or erratic power supply.



FEATURES AND BENEFITS

- Inexpensive to acquire, inexpensive to run
- Whole room heater as opposed to other locality heaters
- Energy saving - save on your heating costs
- Efficiently warms a room of approximately 12m² (9m² in very cold climates)
- Uses efficient convection technology
- Non-flammable. Non-combustible
- No drying of the air. No oxygen burnt up
- Contains no harmful chemicals or metals
- Child and pet friendly - no exposed elements, gas or fans
- Silent, ultra slim and compact design. Out-of-the-way wall mounting
- Quick and easy to install with the patented Econo-Kit (Patent no. 2009/03680ZA & 2004/3769 ZA)
- Can be painted to suit décor (water-based only, not enamel)
- International and New Zealand safety standards compliant
- Discreet On/Off switch
- Three year warranty within New Zealand



EASY STEP-BY-STEP INSTALLATION INSTRUCTIONS

The **ECONO-KIT** includes – 1 x 8mm drill bit (I), 4 x soft wall spacer plugs (II), 1 x drive tool (III), 4 x mounting pins and 4 x hard wall spacer plugs.

- 1 For best results, the panel heater should be mounted approximately 15cm above the floor and away from windows and doors. When installing on soft wall (such as GIB or Plasterboard) it is far easier to AVOID the timber studs. Use the polystyrene packing (400 Watt model only) OR the heater itself as a template to accurately mark the position of the four holes on a flush wall. You may wish to use a spirit level to ensure the template is level.
- 2 Drill the holes accurately. If soft wall or timber, use the enclosed 8mm drill bit. If masonry, use an 8mm masonry drill bit (NOT included).
- 3 **a) SOFT WALL** [such as GIB® or Plasterboard] - Screw the soft wall spacer plugs (II) fully into the four holes in the wall until hand-tight. Do NOT use these threaded soft wall plugs if you have drilled into a timber stud. Use the drive tool (III) and the supplied 8mm drill (I) bit as a lever/handle; or use a screwdriver (IV) by inserting the tip into the back of the drive tool.
b) HARD WALL [such as a timber stud, wooden panelling or brick or concrete] - Push the hard wall spacer plugs into the wall, gently with a hammer.
- 4 Position the heater onto the four spacer plugs. Lock the heater into position with the mounting pins. A hand push should be sufficient when using the soft wall plugs. A hammer will be required on the hard wall plugs.

OPTIONAL PAINTING OF THE PANEL

For painting the front of the heater, the logo plate can be easily removed and replaced by using a screwdriver. Please follow the three easy steps below:

- STEP A:** Insert the tip of a small screwdriver into the bottom edge 'slot' of the logo plate and gently twist/pry off.
- STEP B:** Paint the front of the heater, while carefully avoiding the strips of adhesive tape at the bottom right-hand corner of the wall panel heater, where the logo plate attaches. Use water-based paint (not oil-based and not enamel). Allow the paint to dry before switching the heater on (approximately 24 – 48 hours).
- STEP C:** Once the paint is dry, clip the logo plate back into position on the heater by applying gentle pressure.

